

National Infrastructure Institute
Center for Infrastructure Expertise

CARVER2web™

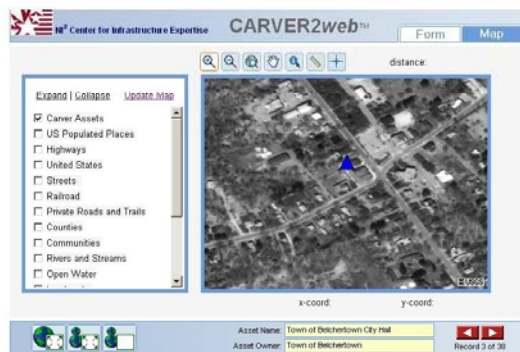
A free tool for prioritizing critical infrastructure and key resources.

The CARVER2® infrastructure analysis system allows for comparison of different types of critical infrastructure (CI) using a non-technical methodology. CARVER2 allows government officials to rank the importance of critical infrastructure and key assets in their respective jurisdictions.

Analysis Categories:

- ❖ Criticality, Accessibility, Recoverability, Vulnerability, Espyability, Redundancy
- ❖ CARVER2 is “user friendly” and requires no specialized technical training

Target Analysis



- ❖ CARVER2 is based on the standard CARVER target analysis used by the U.S. military, U.S. intelligence services and many foreign governments
- ❖ The impact of a facility's loss due to attack, or natural disaster, is ranked and rated in comparison to the total infrastructures in the surveyed community.
- ❖ The tool produces broad-based comparisons that can be the basis for further engineering analysis using traditional methodologies

Using CARVER2

- ❖ CARVER2 “does the math” and requires no specialized engineering expertise
- ❖ All input data is based on open source information: no special security clearances are required
- ❖ Detailed reports are generated, providing justification for important decisions about the use of limited resources for the protection of CI
- ❖ CARVER2 is available **free-of-charge** to government agencies and educational institutions and saves time, frustration and valuable personnel hours by identifying the most important assets in a quick, easy-to-use format
- ❖ For information, including access to the software, contact carver2web@ni2.org or 603-766-3390, or visit us on the web at www.ni2cie.org

The NI² Center for Infrastructure Expertise is a not-for-profit applied research organization dedicated to improving the management and protection of the built infrastructure in the United States. The Center is funded through a grant from the US Department of Commerce National Institute of Standards and Technology.